

# INTEGRATION OF GENDER CONSIDERATIONS INTO NATIONAL ADAPTATION PLANS



**INKAR KADYRZHANOVA**  
REGIONAL GENDER AND CLIMATE CHANGE  
ADVISOR, UN WOMEN ASIA & THE PACIFIC





# | CLIMATE CHANGE...

- ...is a threat multiplier
- ...disproportionately affects women due to their poorer socio-economic position
- ...affects differently women's and men's assets and their wellbeing due to differences in access to land and resources
- ...compromises women's rights due to discriminating social norms and increase in exposure to violence, including sexual assaults
- ... exacerbates gender gap in education and employment
- ... hampers women's livelihoods - women mostly are working in more climate vulnerable sectors

# IMPACTS

**CLIMATE CHANGE CAN OFTEN FURTHER REINFORCE, PERPETUATE AND INCREASE GENDER INEQUALITIES**

**1**

**Increased burdens of care work and poverty**

**2**

**Higher levels of gender-based violence**

**3**

**Higher risk of human trafficking and exploitation**

**4**

**Child and early marriage**

**5**

**Loss of livelihoods, assets, property, and documentation**

**6**

**Higher risk of maternal deaths and sexual and reproductive health risks**

# ROOT CAUSES FOR GENDER INEQUALITY



**Discriminatory  
gendered social norms  
and values**

Photo | UN Women/Narendra Shrestha



**Low rates of political  
representation**

Photo | UN Women/Pornvit Visitoran



**Significant biases in  
legal structures and  
systems**

Photo | UN Women/Fahad Abdullah Kaizer



**Gender-based  
violence**

Photo | UN Women/Putra Djohar

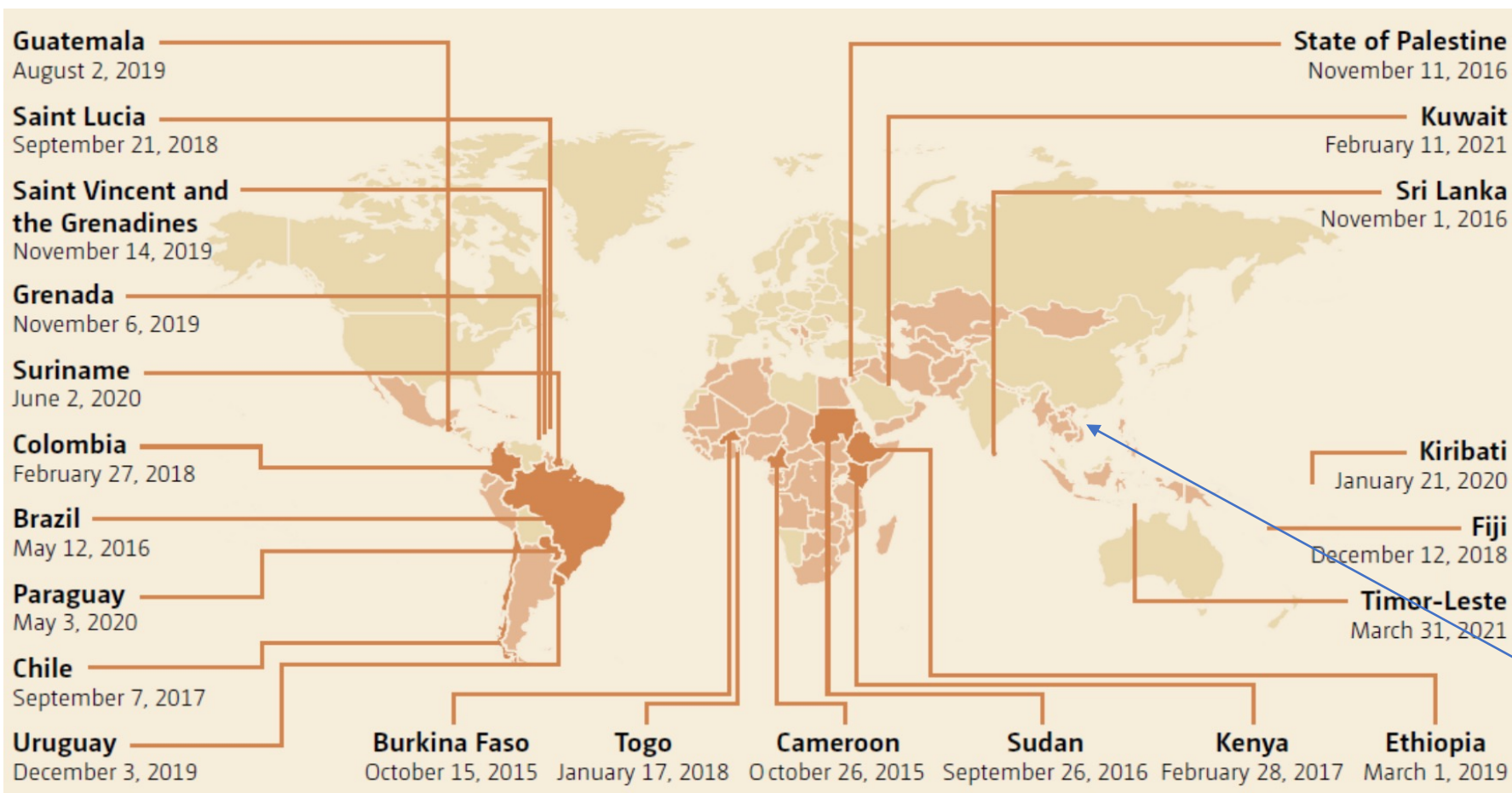
# NATIONAL ADAPTATION PLANS

Most countries are in the early stages of their NAP process, which means there is considerable scope to strengthen integration of gender considerations as they advance...

Majority of the NAPs submitted by developing countries as of 31 October 2020 explicitly address “gender” and “women” > Women as a vulnerable group (80%), beneficiaries of adaptation action (65%) and/ or agents of change (45%)

UN Women Asia and the Pacific supports integration of gender mainstreaming into NAPs as part of our EmPower programme:

- Cambodia
- Viet Nam
- Bangladesh



Information on National Adaptation Plans in developing countries as of 31 March 2021 – darker shades are those countries with a NAP, whilst lighter shades represent the start of the NAP process (UNFCCC, 2021).

# GENDER AND NAPs

- Gender-sensitive approaches go beyond sensitivity to gender differences- **they actively seek to promote gender equality**
- Applying this to the NAP process requires attention to gender throughout the cycle of planning, implementation, monitoring and evaluation
- Whilst many countries have made efforts to integrate gender into their NAPs – very few documents elaborate how these approaches, principles or ambitions will be achieved in their specific context (NAP Global Network, 2017-18)



Recognition of gender **differences in adaptation needs, opportunities and capacities**



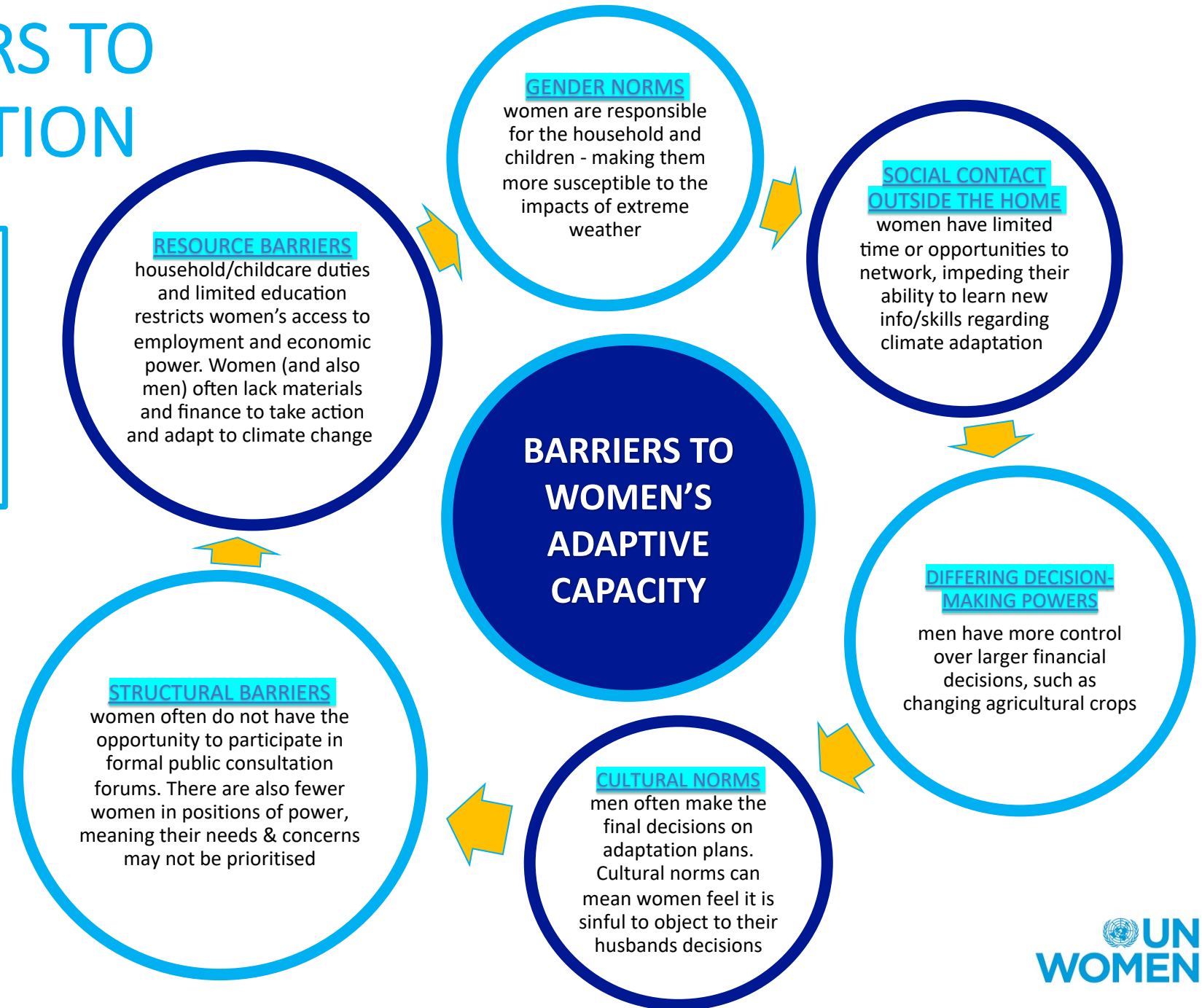
Equitable **participation and influence** by women and men in adaptation decision-making processes



Equitable **access to financial resources and other benefits** resulting from investments in adaptation between women and men

# ASSESSING BARRIERS TO WOMEN'S ADAPTATION

Clearly identifying the barriers to enhancing adaptive capacity for women is very important. This is because **each barrier provides a springboard for what type of solutions or interventions could be effective**. Thus, allowing for the development of **clear goals and targeted action** to ensure the integration of gender mainstreaming into National Adaptation Plans.



# CAMBODIA

## UN Women & BBC Media Action: Participatory research assessment: Gender-based Vulnerabilities to Climate Change

Identifying contextual gender-based vulnerabilities is key to developing effective adaptation plans, at both the regional and national levels.

Efforts to shift gender norms can help improve women's recognition of their own abilities, their agency and the adaptive capacity of their families and communities

### Key Findings

Women and men are concerned about the impact of CC on their livelihoods - frequent droughts, water shortages and seasonal storms and flooding. Saltwater intrusion was also a high risk

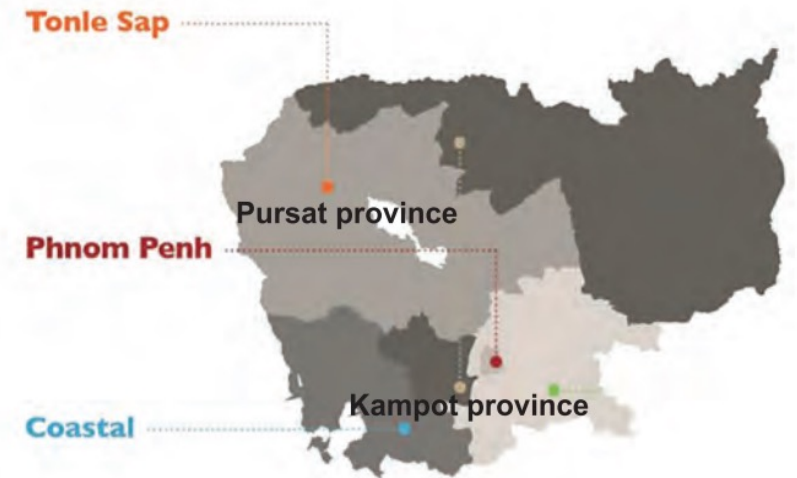
Women are primarily concerned about the impact of CC on their access to resources (food & water), health of their children and family

Women are not able to influence big spending decisions – *agricultural crops or fishing equipment* – especially when they lack economic power and/or emotional support

Women and men contribute economically to respond to CC challenges, *with women attempting to supplement income, in addition to their household responsibilities*

Gendered divisions of labour limit actions women can take compared to men

Women from poorer households, those with disabilities or those acting as a household head were particularly vulnerable to climate change



Map of the study locations



# VIET NAM

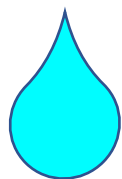
The **NAP** in Viet Nam: goal of reducing vulnerability to climate change impacts



**Objectives:** (i) improving the effectiveness of adaptation through socio-economic development strategies  
(ii) increasing resilience and adaptive capacity of communities, economic systems and ecosystems;  
(iii) Disaster risk reduction

## UN WOMEN & ISPONRE ASSESSMENT: The State of Climate Change and Gender Equality

### SECTORAL APPROACH - GAPS & OPPORTUNITIES



There are huge disparities in access to water in Viet Nam. Yet a review of national policy documents reveals that **gender issues have been mentioned as an “add-on” component**. As a result, there are no policies focused on a gender-mainstreamed approaches to managing water.



In waste management there is the incomplete legal protection of women, with the 2015 Law on Environmental Protection **failing to acknowledge the role of women informal workers**, who make their living from collecting, sorting, recycling and selling valuable materials.



Whilst significant progress has been made to improve renewable energy access in Viet Nam, in most national renewable energy policies **there is no explicit mention of gender or women**

**KEY RECOMMENDATION:** Conduct studies on the gendered impacts of CC by sector and by region to identify entry points through which to integrate gender into climate-related policies

# KEY RECOMMENDATIONS for Gender-Responsive NAPs

**Policy design** should include a gender analysis to ensure women's vulnerability is taken into account

National level policy makers should ensure **systematic gender analysis** is conducted by local authorities before passing up these issues to a more central level

Policy level CC interventions should have clear plans for how they will engage women & men at **the community level**

Effective **political, civic and social participation of women** in relevant committees or CSO groups



**Intersectional human-rights based approach** should be considered recognizing that CC impacts are linked to factors such as income, age, religion, ability...

Policy level initiatives should take into account **cross-cutting ways** gender-based vulnerability to CC interacts with other issues e.g. health & economic empowerment

**Women's recognition of their own abilities, agency and value** – so they can support themselves, their families and communities to adapt to CC

**Climate-risk assessments and sex disaggregated data** should be used for policymaking

Gender sensitive approach **throughout policy cycle**: project design, implementation and monitoring

THANK YOU!

