

FONERWA PRESENTATION

-----25th September 2018/NAP-GSP-----



FONERWA designed for



FMT financed by

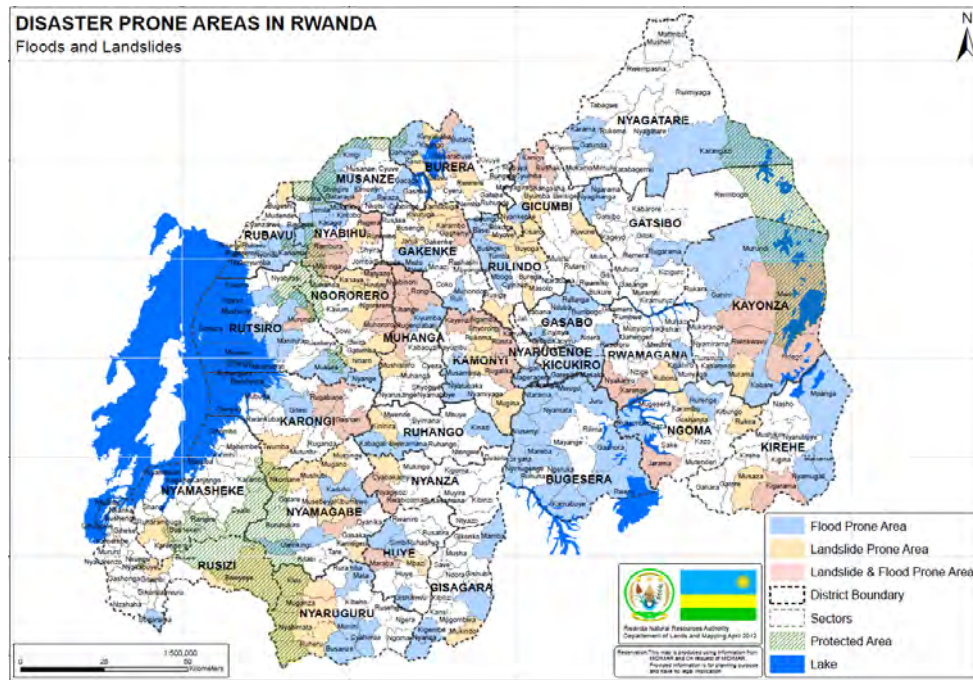


Long Term Rwanda's vision:

Becoming a low-carbon and climate-resilient economy
by 2050.

- Landlocked in the heart of Africa;
- The fertile and flourishing lands of Rwanda are at risk with the growing population(to double in 20years);
- Climate change is already intensifying droughts and crippling the country's vulnerable ENR(Environement Natural Resources and Agricultural sector);

Background of the Issue



◆ Climate modeling projects rises of up to 2.5°C by the 2050s) and increasingly intense rainfall events.

◆ Increased risk of flooding (and droughts in some areas), landslides and soil erosion.

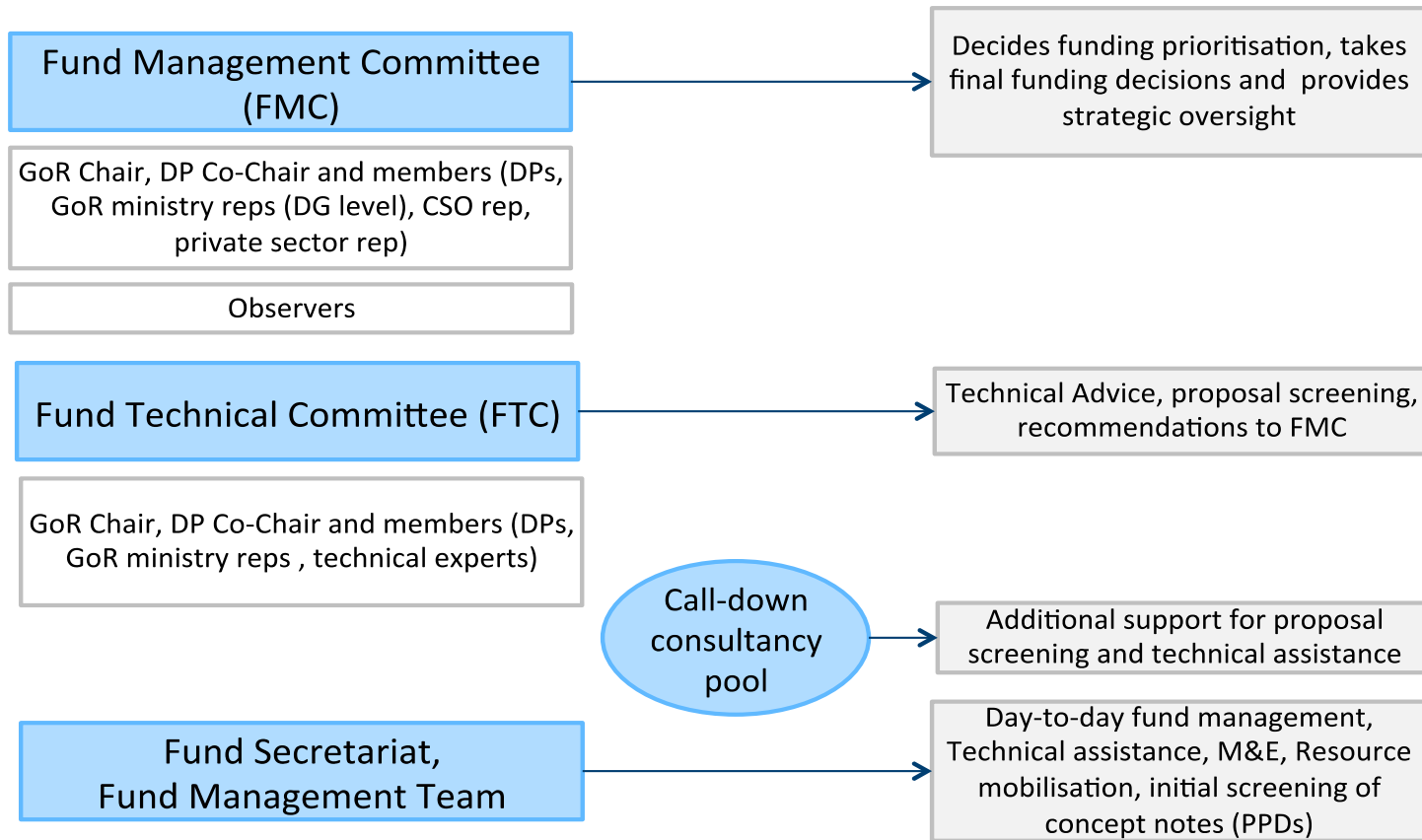
Policy and Strategy Context - GGCRS: Programmes of Action



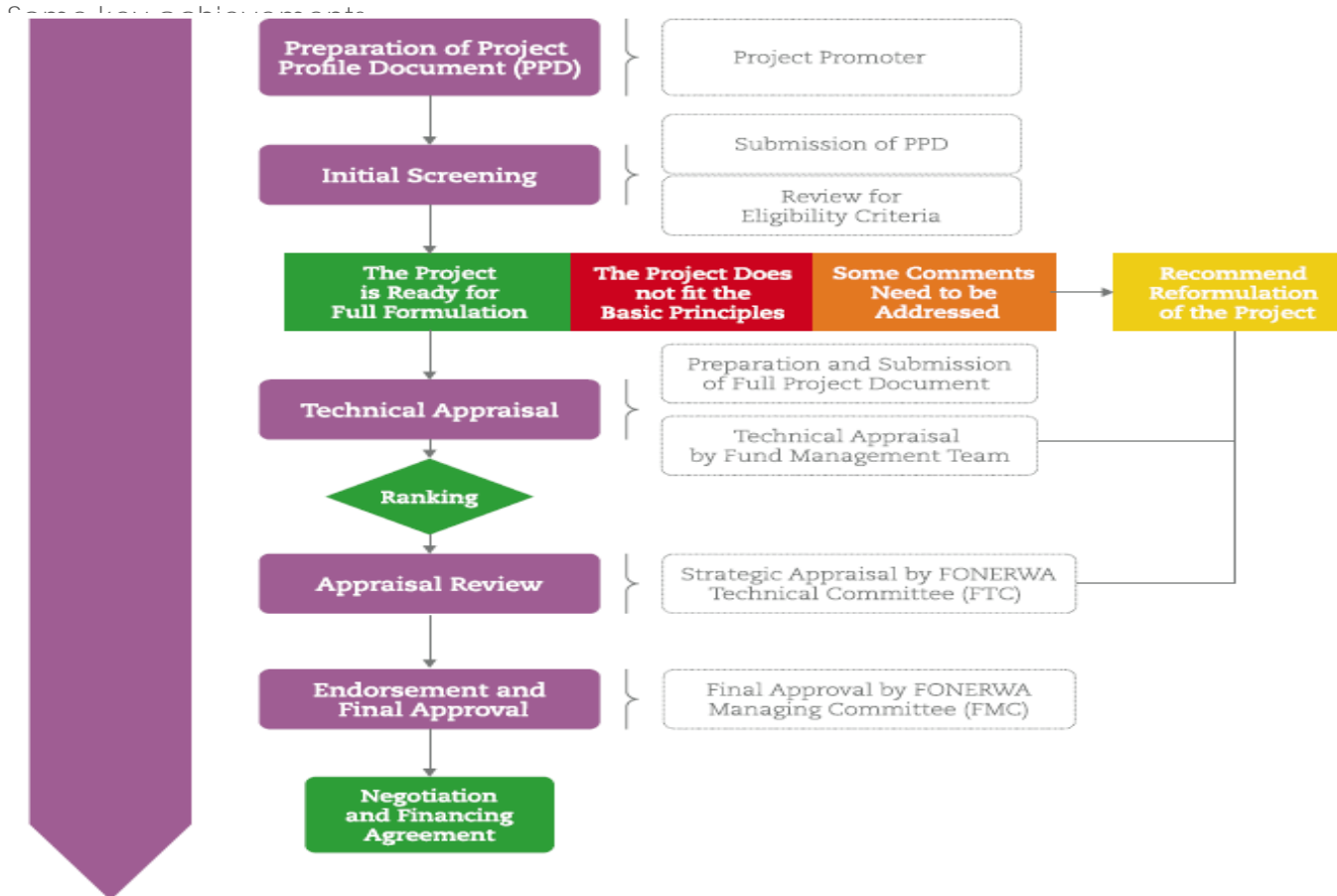
SDG's Tackled by the FONERWA

- Affordable and Clean Energy(SDG 7);
- Decent Work and Economic Growth(SDG 8);
-
- Sustainable Cities and Communities(SDG 11);
- Climate Action(SDG 13);
- Life on Land(SDG 15);

Current Governance Structure



SCREENING PROCESS



Implementation updates



FONERWA designed for

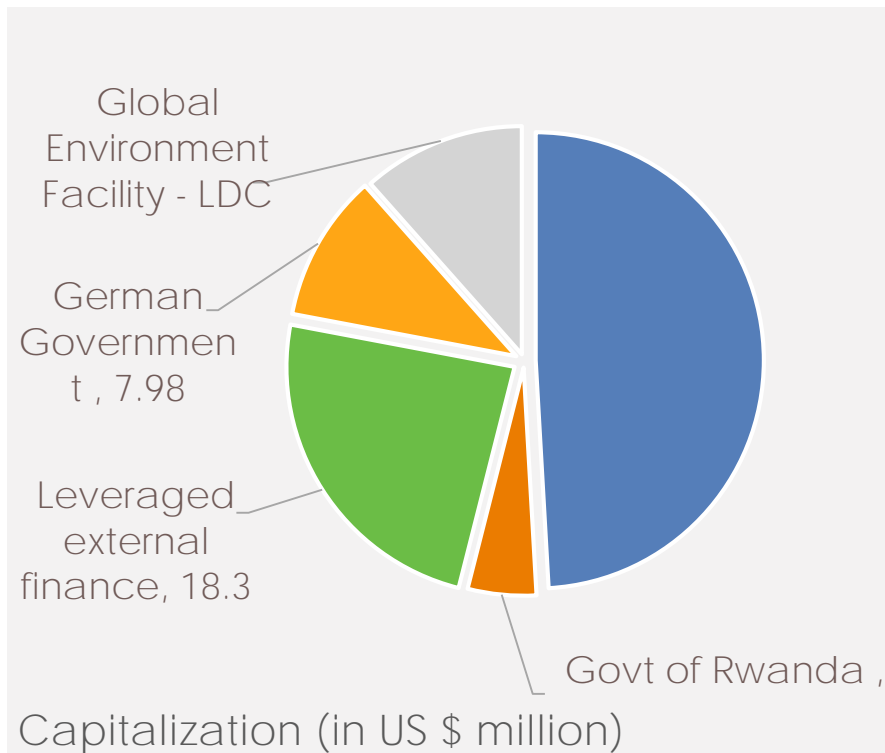


FMT financed by



FONERWA's CAPITALIZATION

FONERWA is capitalized through various sources and has to date mobilized over **\$ 90 million**



Important to note that given its structure, governance and mission, FONERWA is increasingly seen as the national primary engagement point for global climate financing including Multi-laterals

1. Green Climate Fund (GCF)
2. World Bank/Climate Investment Funds (PPCR/FIP/SREP)

Employment and Poverty Reduction

- 90,498 Green Jobs Created

Environmental Protection

- 35,356 Ha of Forest Land Rehabilitated
- 12,998 Ha of Watersheds and Water bodies Rehabilitated

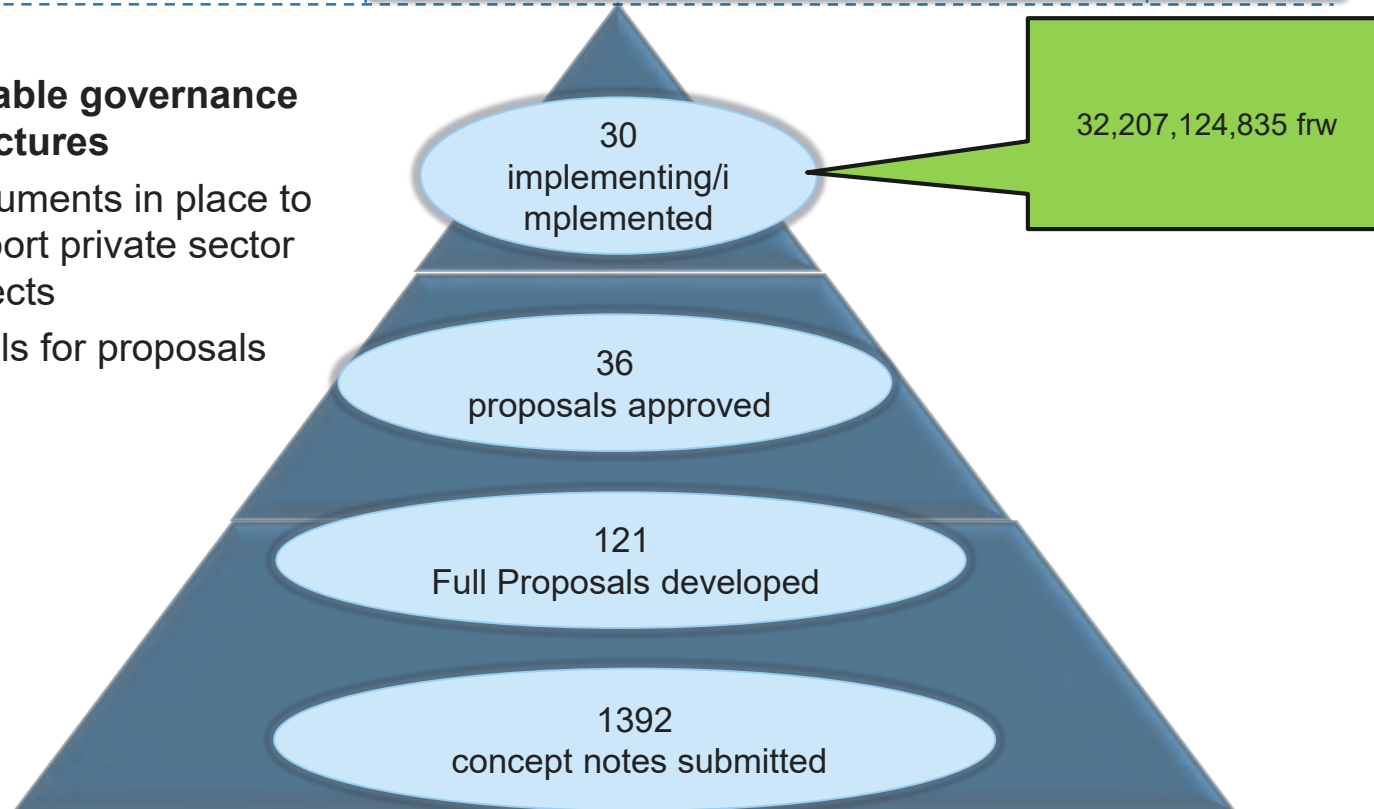
Climate Resilience and Livelihood Improvement

- 18,914 Families Connected to Off-grid energy



Current implementation status

- **Reliable governance structures**
- Instruments in place to support private sector projects
- 9 calls for proposals





PORTFOLIO OF PROJECTS – REPRESENTATIVE AND INCLUSIVE FINANCING

ENTITY TYPE	FUNDING	PROPORTION
Districts	7,160,657,261	22.2%
Districts Partnering with NGOs	4,311,572,605	13.4%
Central Government	17,438,334,837	54.1%
NGOs	2,030,664,485	6.3%
Private Sector	1,265,895,647	4%

- NGOs include national as well as international NGOs
- Private Sector includes both medium and small sized enterprise in critical sectors – renewable energy, mining and agriculture
- Partnerships with local authorities increase the absorption capacity of NGOs and implementation capacity of local authorities
- District have earmarked funds and have been critical in adaptation financing and livelihood enhancement
- Central Government and its agencies have been critical in ensuring accountable application of resources especially in adaptation

Challenges/opportunities

Challenges

Sustainable development undermined by business as usual performance/focus

Limited coordination among sectors

Capacity/ownership of sustainable development processes

Identifying champions and partnerships for capitalization of the fund

Identify critical areas of intervention

Opportunities

National and global climate change Linkages: NDCs and SDGs underpinned by global funds

National (cross sector) climate resilience strategy

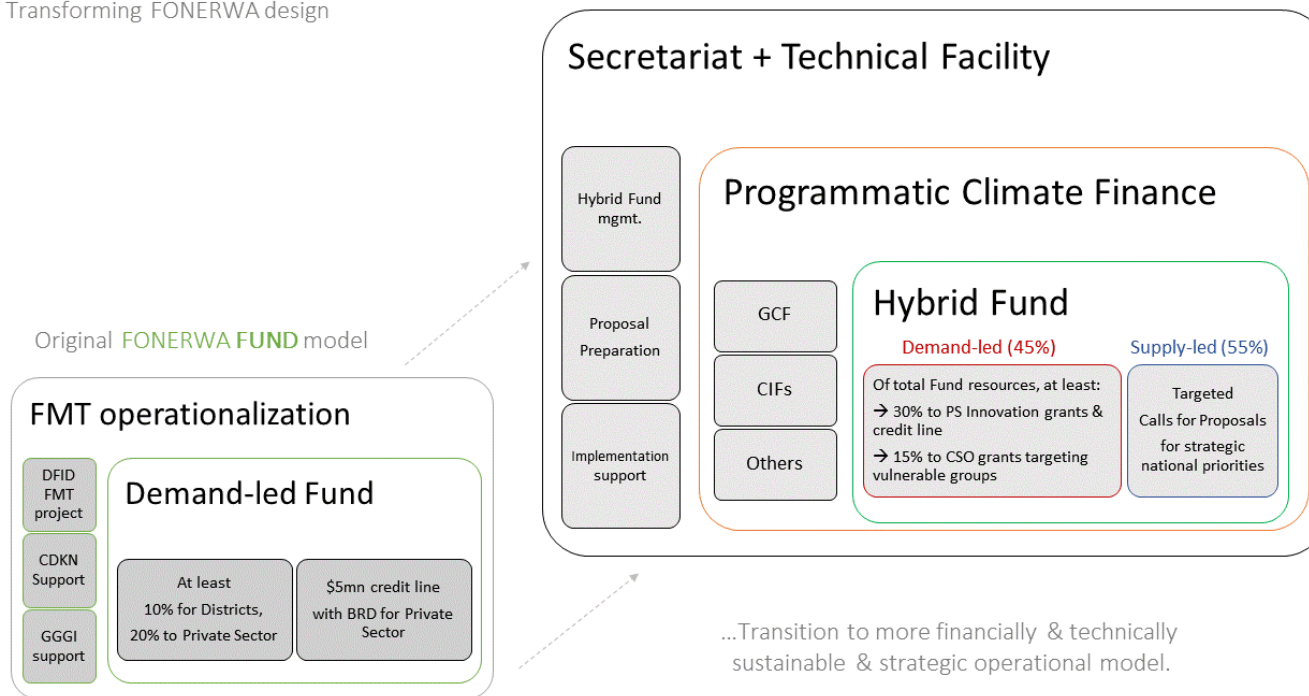
Climate change recognized as an economic development issue

Strategic engagement of reliable Partners

Focus on national priorities with global implications: NDCs and SDGs.

Transforming FONERWA design

Post-Paris Model: Rwanda Green Finance FACILITY



GREENING OUR
NATION FOR FUTURE
GENERATIONS
RESILIENCE

