




NAP-GSP REGIONAL TRAINING WORKSHOP FOR ASIA
Mainstreaming Climate Change Adaptation into Water Resources

Seoul, 13 - 16 September 2017

**Session 2: Climate Information and
Services**

Amir H. Delju (WMO)

Climate information

An aerial photograph of a coastal city, likely Lagos, Nigeria, showing a large river (Lagos Lagoon) and a bridge crossing it. The city is densely packed with buildings, and the coastline is visible in the background. The image is overlaid with a semi-transparent blue band containing text.

Climate information is the collection and interpretation of weather and climate data that is credible, relevant and usable.

WMO Global Observing System

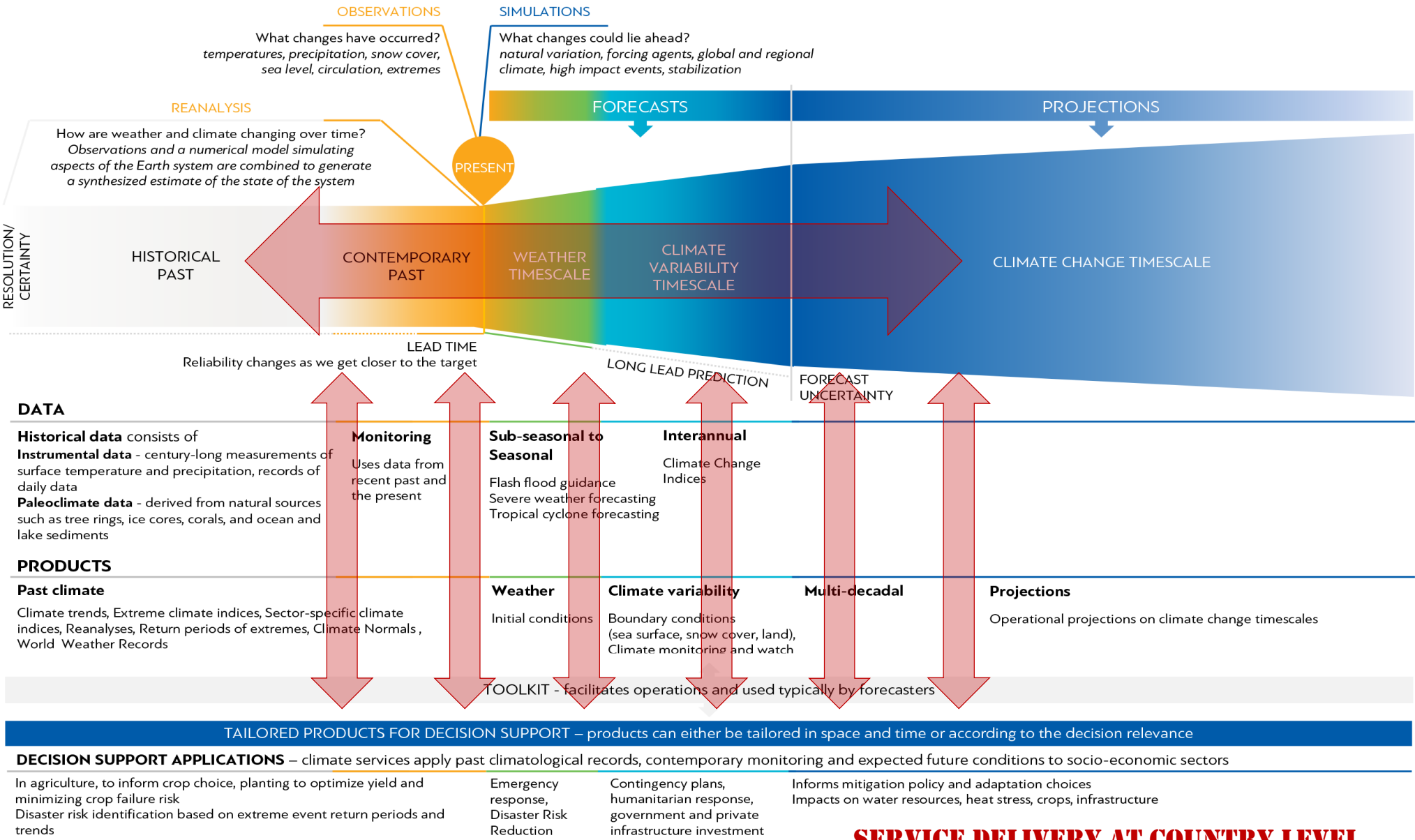


Climate Data, Products and Information

- Raw data, summaries, tables, graphs, maps, reports and analyses. Spatial distributions
- Historical climate data sets for characterizing past climate behavior on all time and space scales (time series)
- Standard, occasional and specialized products (locally produced for user groups)
- Climate monitoring products-analyzing the state of both past and current climate and global to regional teleconnections
- Indices- historical climate patterns to the user in a simple and readily understandable form
- Climate outlooks- forecasts of the values of climate elements averaged over timescales of about one month to one year
- Climate prediction- a probabilistic statement about the future climate on timescales ranging from years to decades
- Climate projection- a statement about the likelihood that something will happen several decades to centuries in the future
- a plausible future climate constructed for investigating the potential consequences of human-induced climate change
- Global Climate models- climate processes on a global scale
- Downscaled products- Regional and local climate models

CLIMATE SERVICES INFORMATION SYSTEM

Data and Products for Climate Services



SERVICE DELIVERY AT COUNTRY LEVEL

Climate Information and Services are **crucial resources** for decision-makers at all levels working on **medium and long-term planning**.



**ADAPTATION
PLANNING**



**SECTORAL
DEVELOPMENT**



**MANAGE
DISASTER RISK**



**PLAN FOR
FUTURE RISK**

Types of climate information

Depending on the level of **complexity**, climate information can be characterized as:

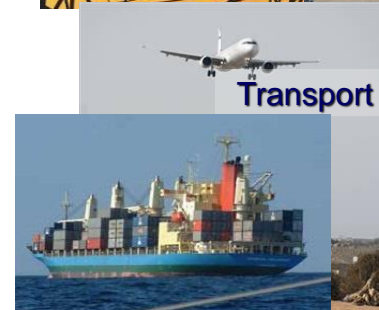
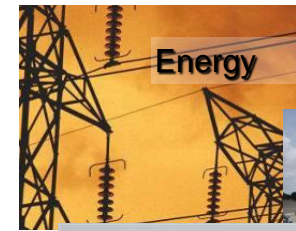
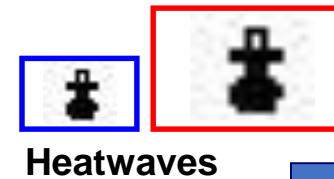
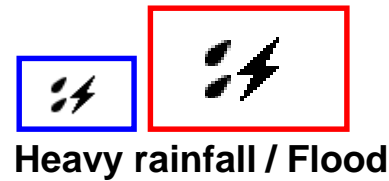
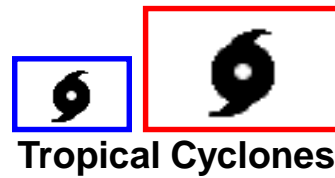
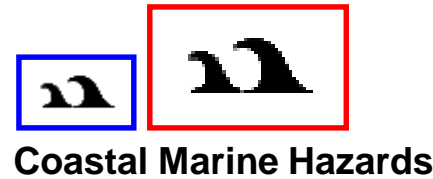
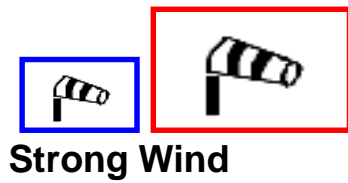
BASIC

INTERMEDIATE

ADVANCED

NB! This classification is based on the complexity of the information, *not* the level of complexity of the decision it could inform.

Concern...



Vulnerability and exposure on the rise !

Information products and services based on climate predictions, key tool to support adaptation

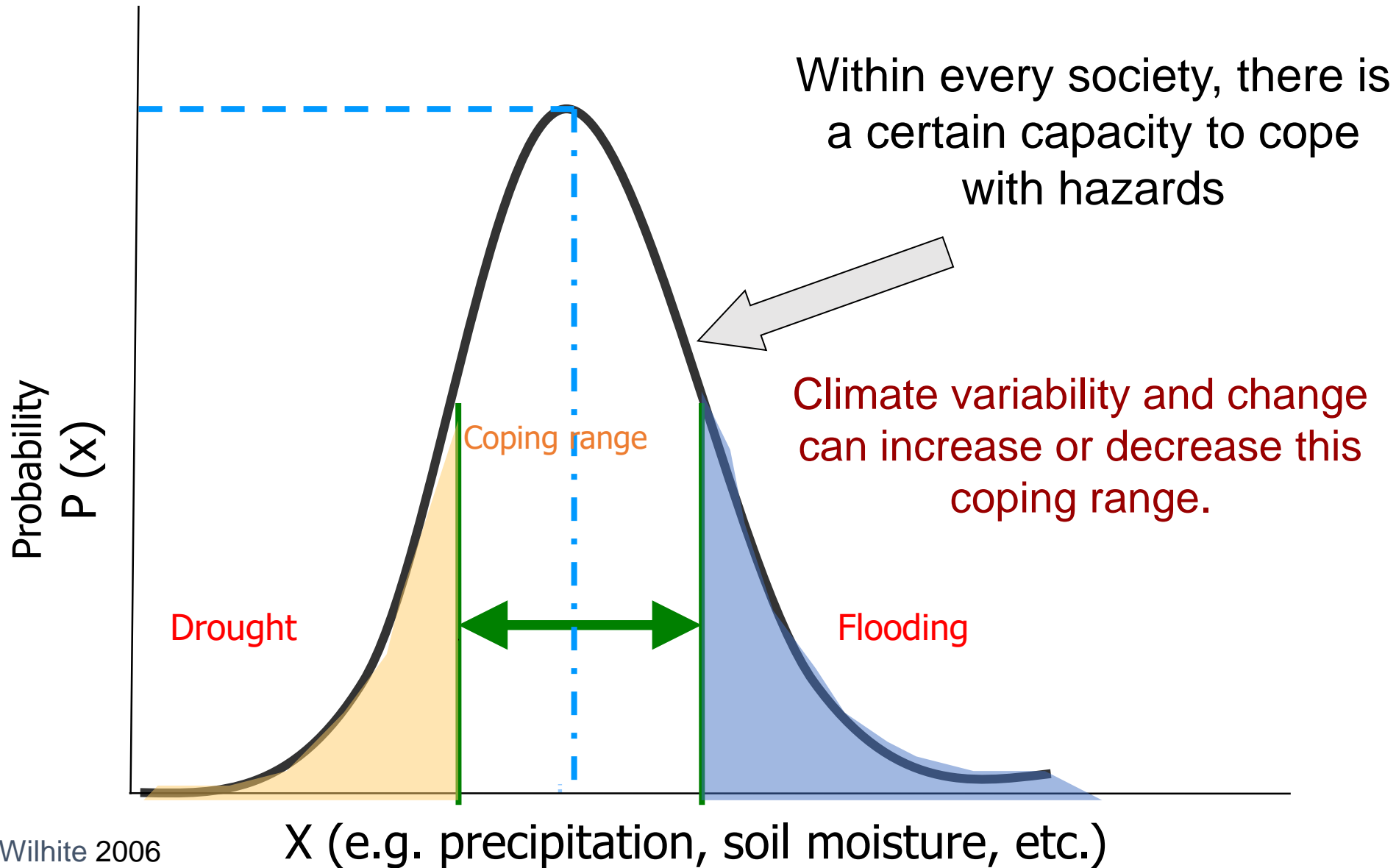
Intensity

Hazards' intensity and frequency are increasing

Frequency



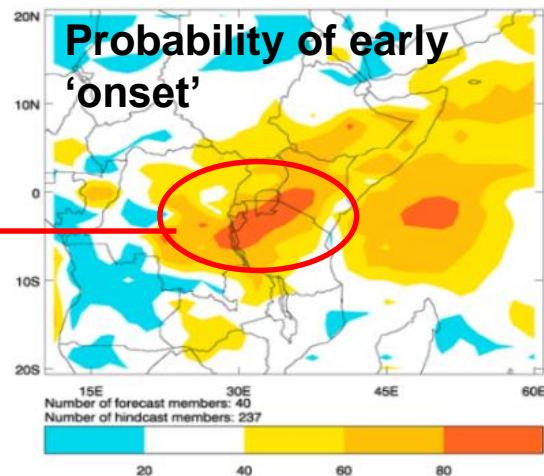
What it used to be...



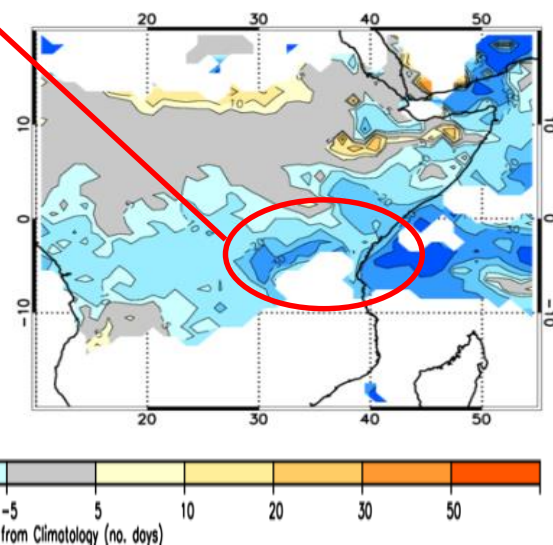
Source: Wilhite 2006

New trial user products: onset prediction and monitoring

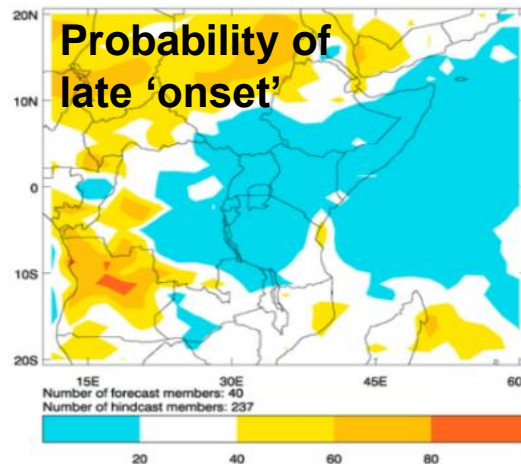
Early onset
predicted most
likely



Early onset
occurred



CSRP monitoring
product: Observed
time of 'onset' (in
days difference from
long-term average

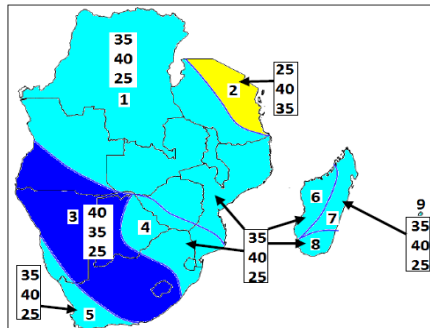
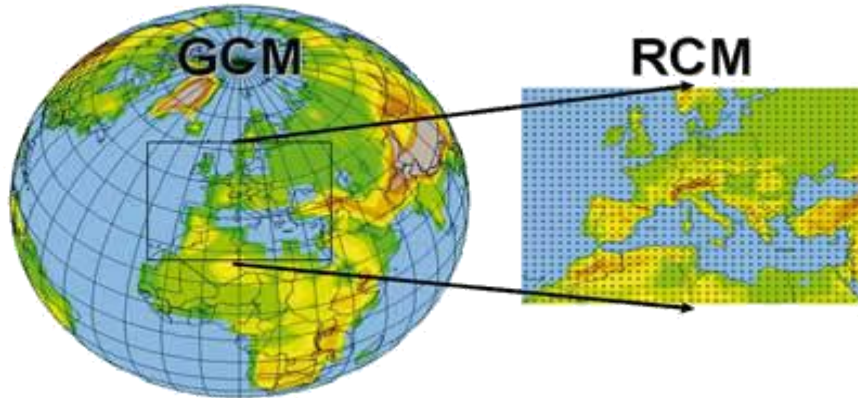
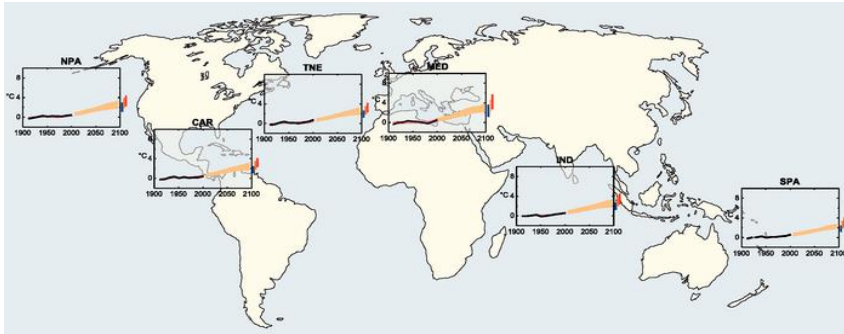


Prediction is based
on local time of
arrival of 20% of
long-term seasonal
average

Greater Horn of Africa, short-rains season
2011 – 1 month lead time prediction

- Assessment over retrospective cases indicates forecast can discriminate early/late onset in ~70% of cases
- Onset forecasts being trialled at regional centres in East, West and southern Africa

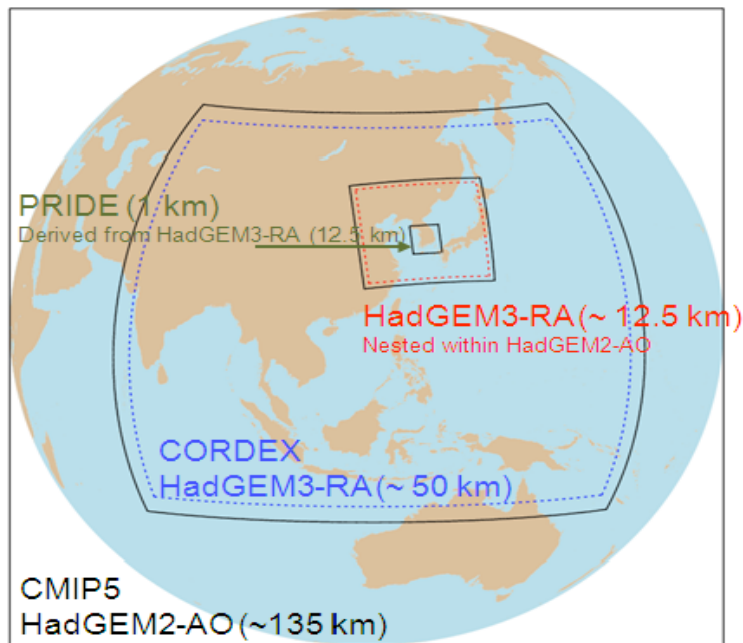
Examples of climate services



- Expected future temperature
- Precipitation scenarios
- Sea level changes
- Snow, glacier and sea ice coverage
- Seasonal tropical cyclone activity
- Growing seasons
- Potential impacts of climate change on the natural environment and major business and public sectors

A Regional Downscaling Project coordinated by KMA

Domains for climate projections at KMA



KMA/NIMR

CMIP5 experiment with HadGEM2-AO and provide GCM forcing
Regional downscaling for 2 domains with HadGEM3-RA
Maintaining CORDEX-EA databank

Dynamical Downscaling Group

- Multi-RCMs forced by HadGEM2-AO
- Ensemble method
- Uncertainty Assessment

Statistical Downscaling Group

- Methods' Development
- High-resolution projection data up to 1 km
- Focusing on national scenario

(Extreme) Analysis Group

- Evaluation of CORDEX outputs for extreme events
- Evaluation of Tropical Cyclones

Application Group

- Essential factors for administrative districts in *agriculture*, *health*, and *disaster prevention* sectors.

- 5 regional climate models for CORDEX-EA domain (50 km) and smaller sub-region (12.5 km).
- 1 statistical downscaling model for Korean peninsula up to 1 km's resolution.
- 1 group from Japan (U.Tokyo) has participated recently.

Applications

- Based on the results from 4 RCPs × 2 RCMs
- Spatial distribution and time series for 230 administrative districts
- Essential factors for agriculture, health, and disaster prevention sectors.

<Agriculture>

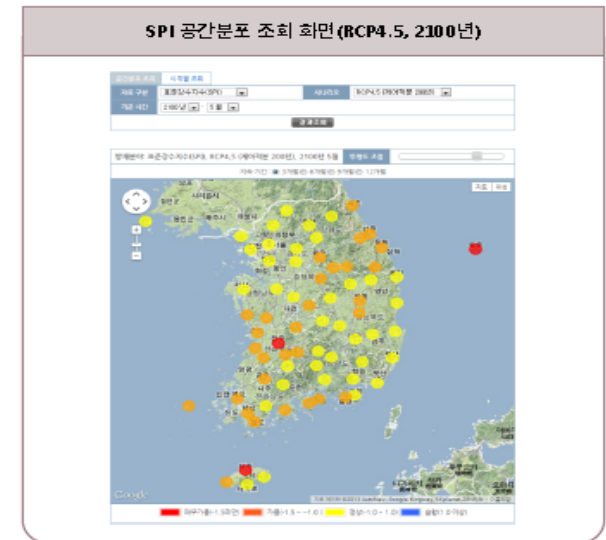
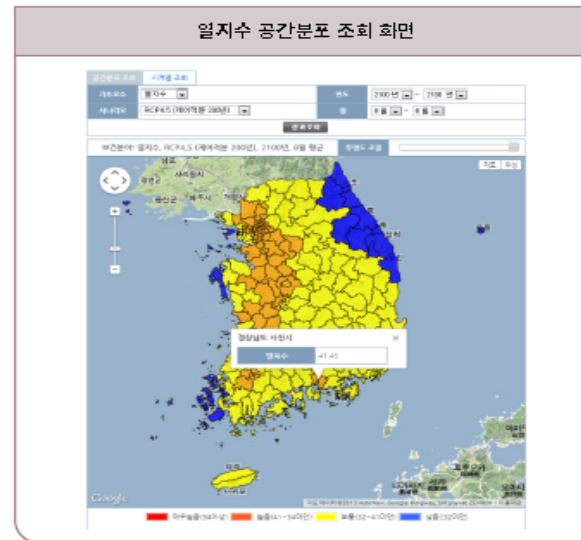
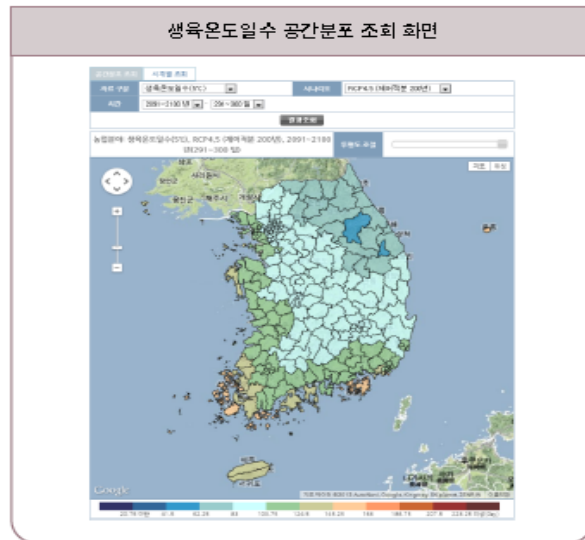
growth duration, effective accumulated temperature, winkler scale, vegetable period, crop period, frostless period, chill units, climatic productivity index, thermo-hydro index, evapotranspiration, heating period, cooling period, etc...

<Health>

Heat Index (HI), Discomfort Index (DI), Apparent Temperature (AT), Net Effective Temperature (NET), Humidex, Windchill

<Disaster Prevention>

Standard Precipitation Index (SPI)



End-users

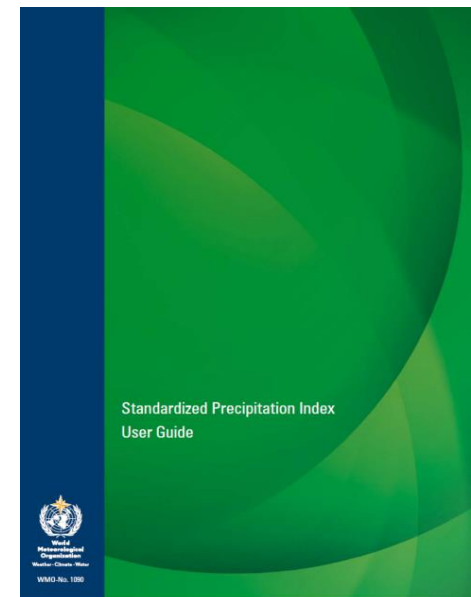
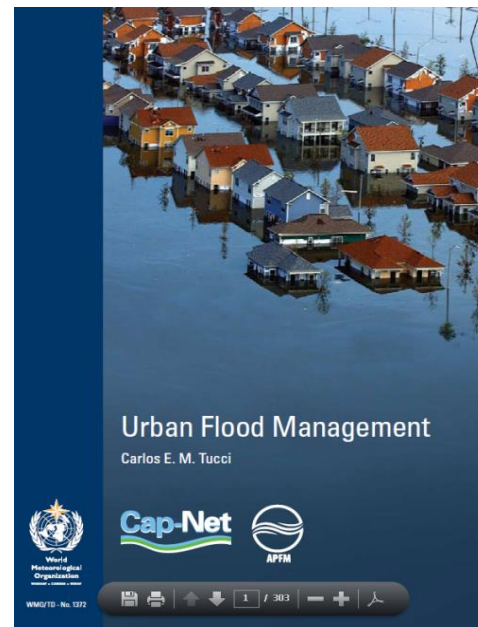
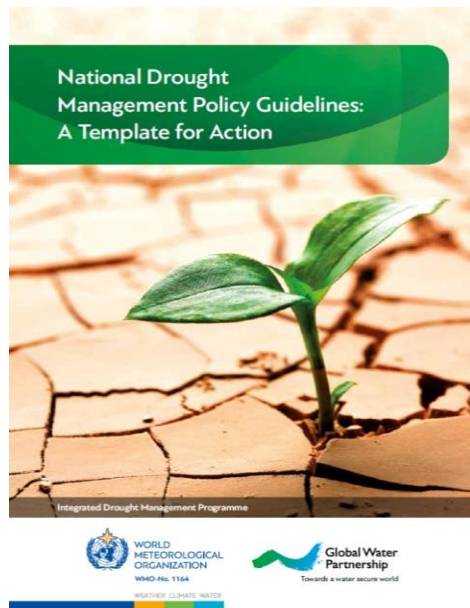
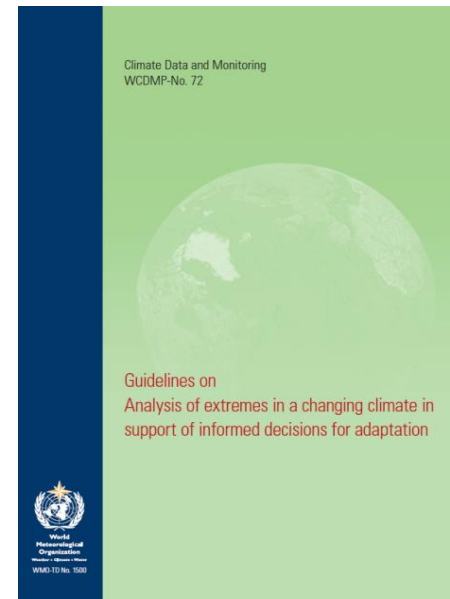
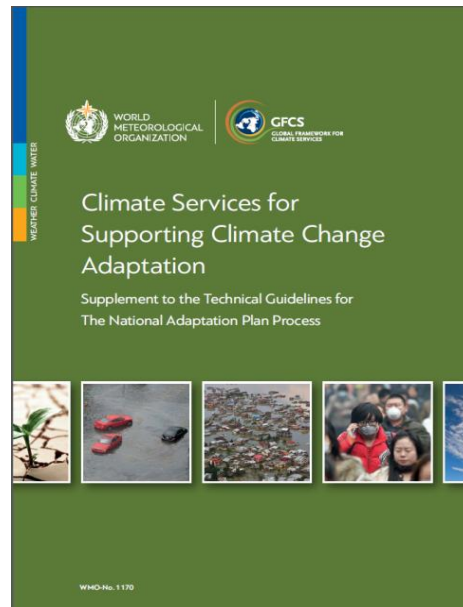
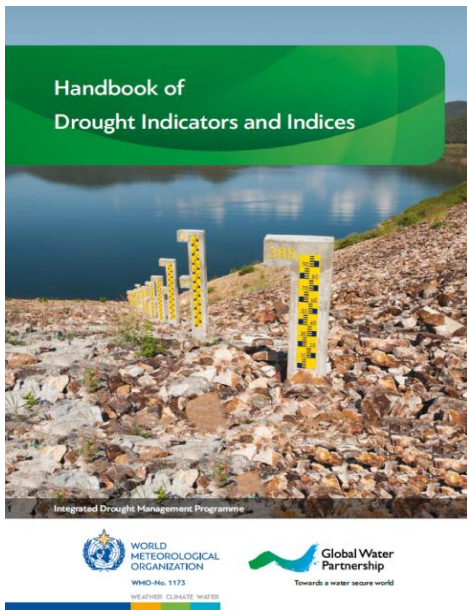
Communities

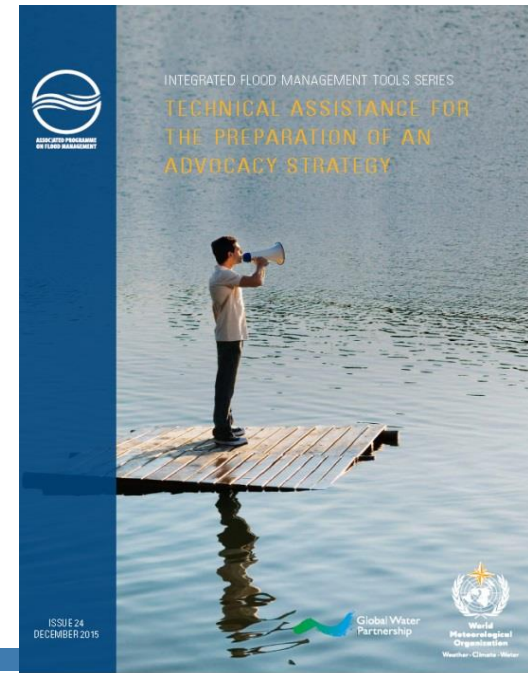
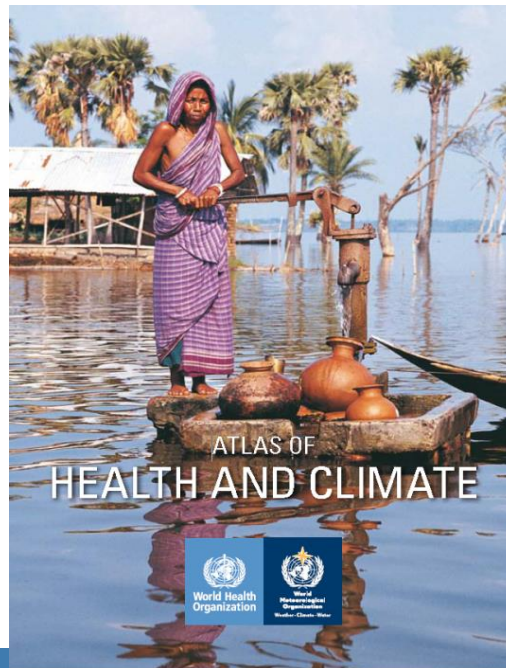
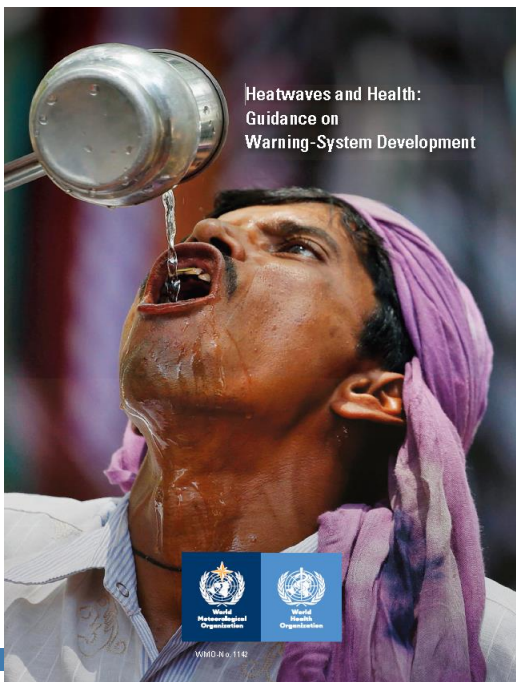
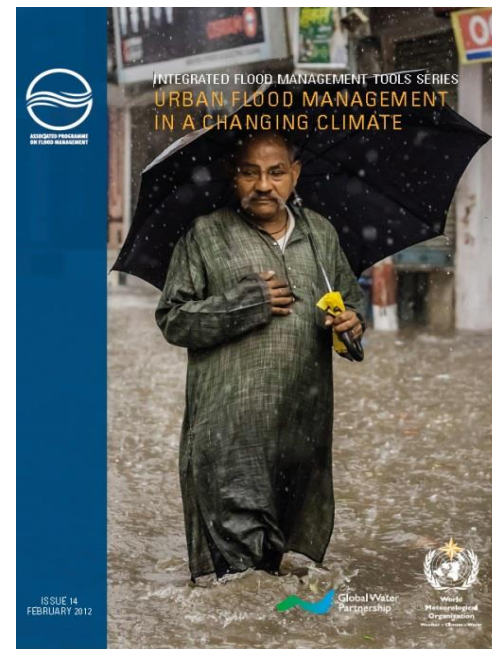
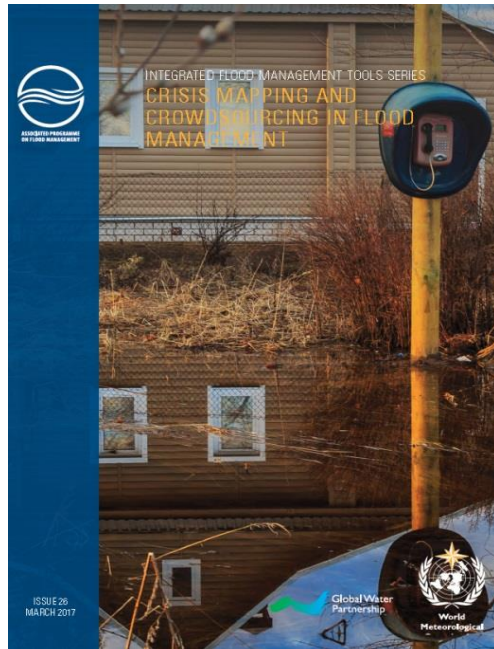
Private sector

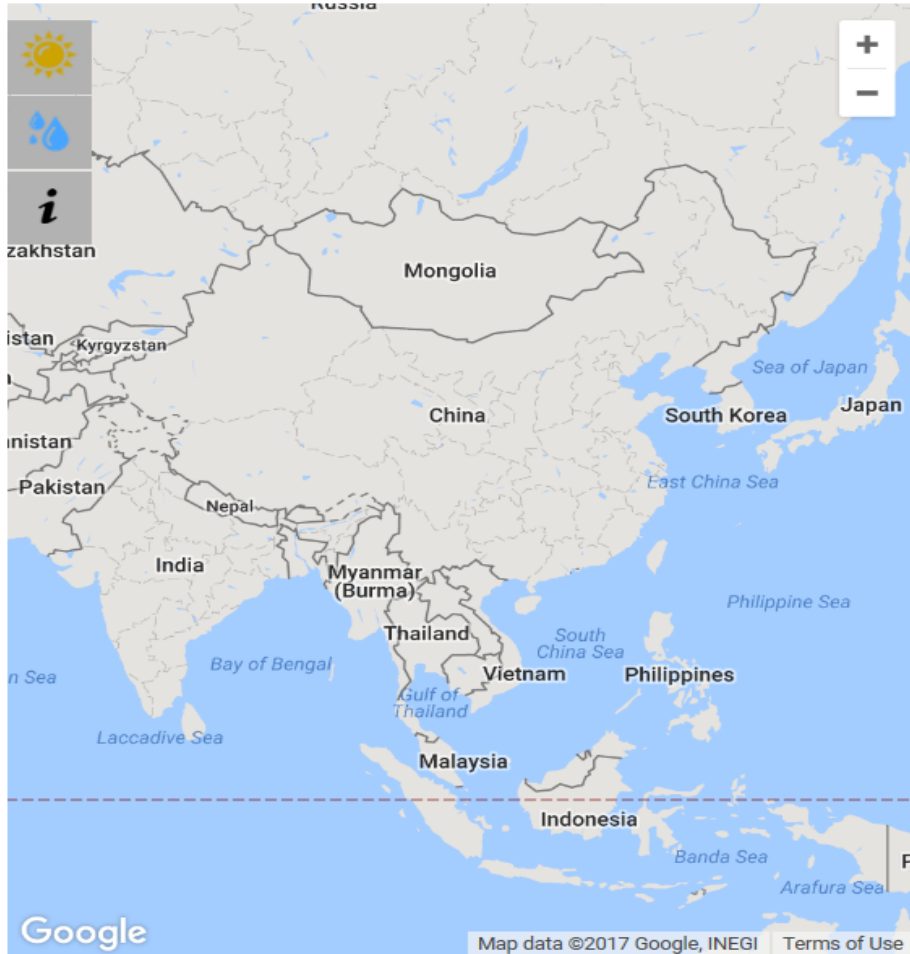
Policy-makers



Anybody who needs to make a decision on a matter that is affected by the weather and climate can benefit from climate information and services.







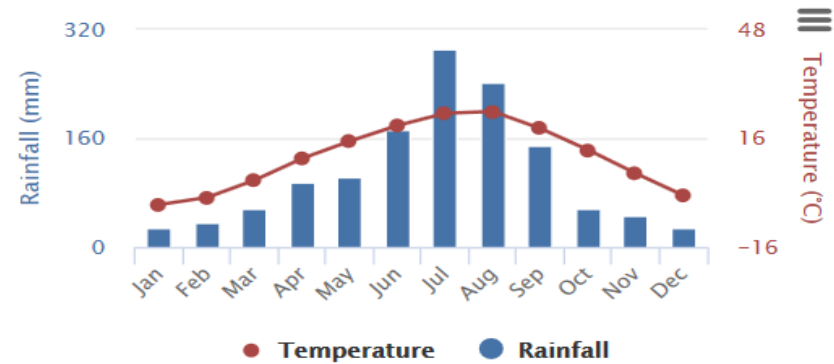
Choose your variable

Temperature and Rainfall

Choose your time period

1901-2015

Average Monthly Temperature and Rainfall for Korea, Republic of from 1901-2015



It is important to evaluate how climate has varied and changed in the past. The monthly mean historical rainfall and temperature data can be mapped to show the baseline climate and seasonality by month, for specific years, and for rainfall and temperature. The chart above shows mean historical monthly temperature and rainfall for Korea, Republic of during the time period 1901-2015. The dataset was produced by the Climatic Research Unit (CRU) of University of East Anglia (UEA).

[Click to download historical data.](#)

Home	World Climate	Climate System Monitoring	El Niño Monitoring	NWP Model Prediction	Global Warming	Climate in Japan	Training Module	Press release	Links
------	---------------	---------------------------	--------------------	----------------------	----------------	------------------	-----------------	---------------	-------

HOME > World Climate > ClimatView

ClimatView - a tool for viewing monthly climate data

The ClimatView tool enables viewing and downloading of monthly world climate data, including monthly temperature/precipitation statistics and 30-year climate normals. Data are available for the period since June 1982, when JMA started receiving CLIMAT messages. Click on a station to see the relevant monthly data chart.

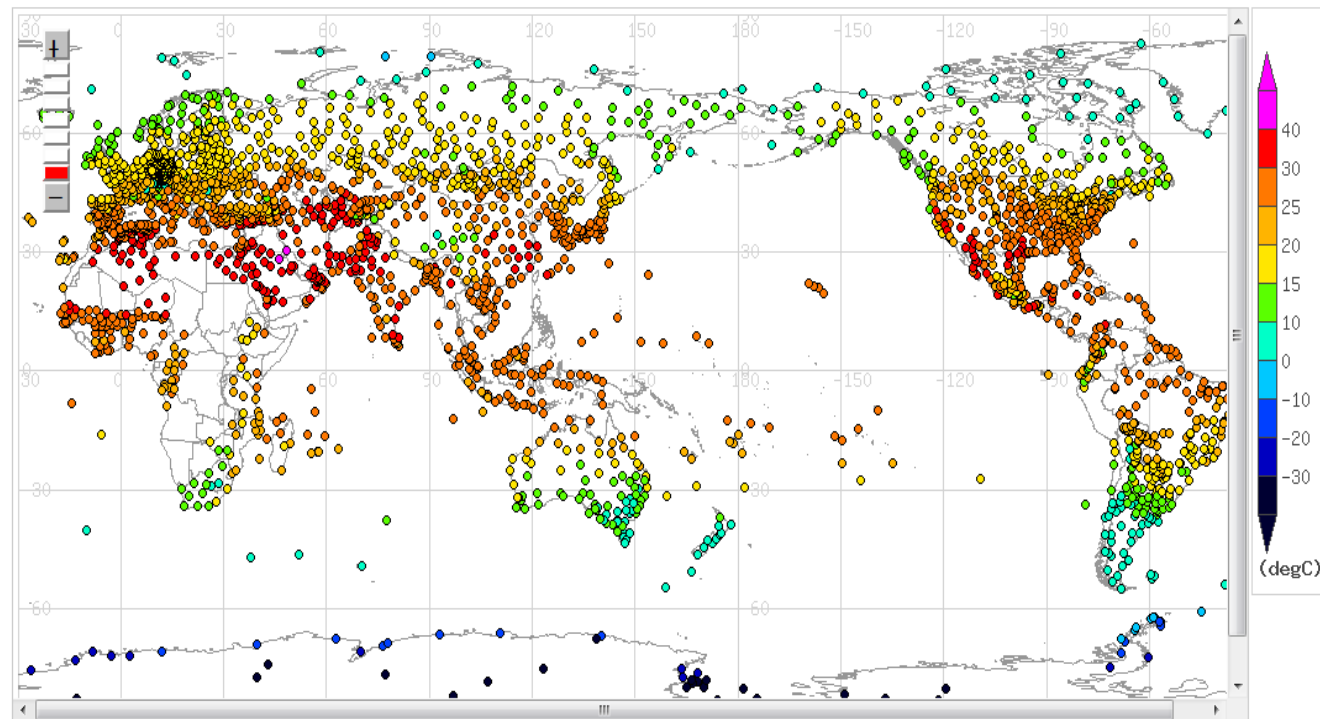
[Outline of ClimatView](#) [If this website is slow, check this page.](#)

Search Form

Region: Element: Year/Month Map Reso. High Low

[Data List >](#) [Printable >](#) Click the "Show" button to reflect elements selected via the drop-down lists and radio button.

2017-07: [Mean Temp.(degC)]



Thank you Merci



WMO OMM

World Meteorological Organization
Organisation météorologique mondiale

